
****If you already have your scanner installed and are looking for instructions on using different browsers see the *Browser Compatibility Settings* section on pg. 5****

INSTALLING A SCANNER-DRIVER

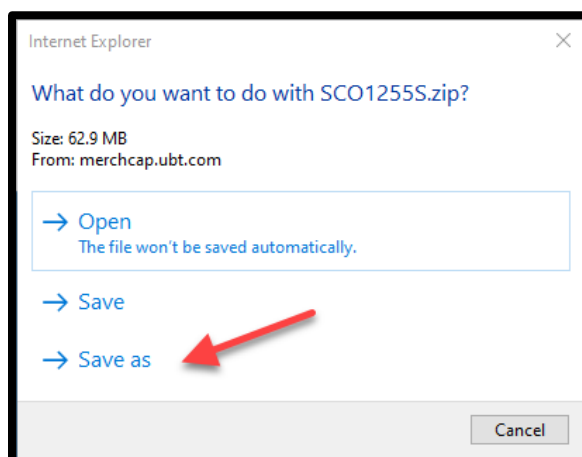
****Before starting, turn the scanner machine off and verify it is not plugged into the computer. Also verify you have full administrator rights to your computer. ****

Visit our [Desktop Teller Page](#)

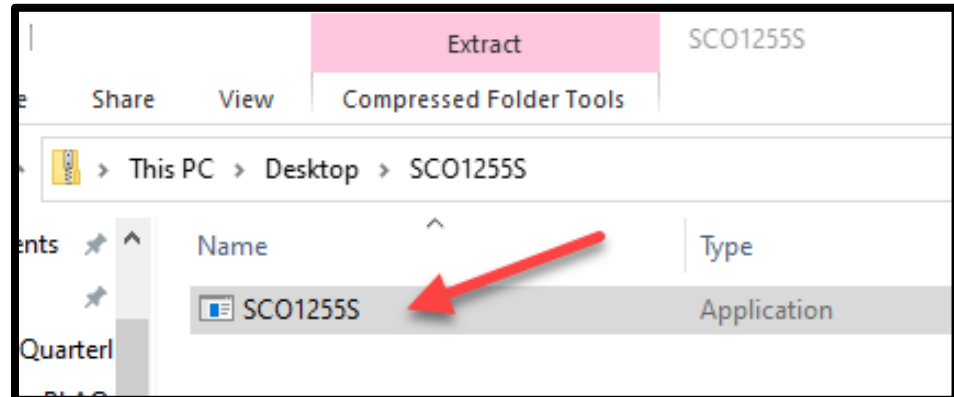
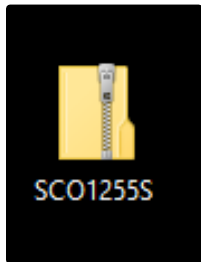
Locate the **Drivers and User Guides** section and select the **Download Driver** tile



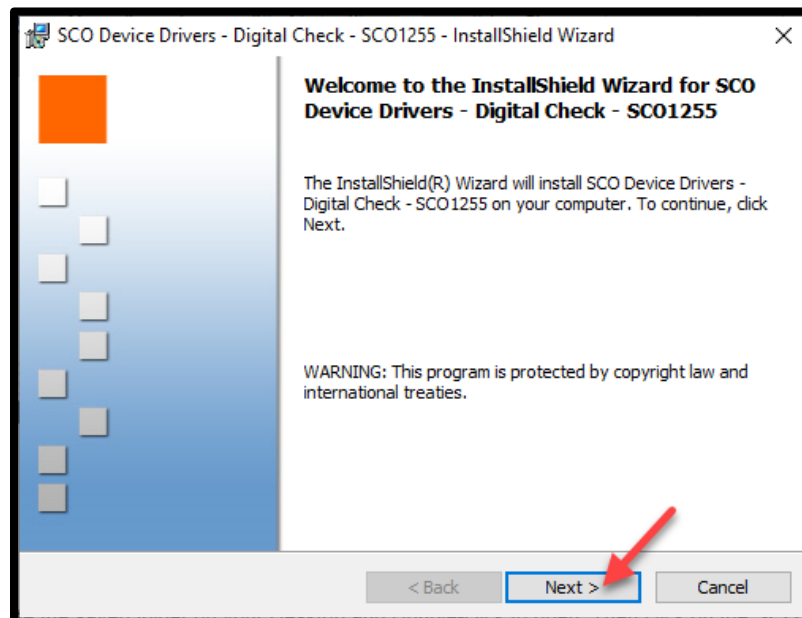
From the pop-up (as seen below), select **Save As** and save it to your desktop



Locate the saved folder and open it. Select the **SCO1255S** file to open the SCO Device Drivers Install Wizard.



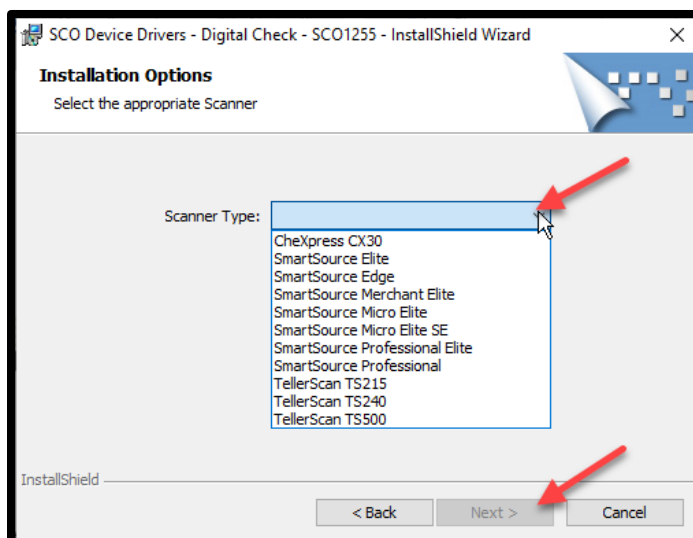
The SCO Device Drivers Install Wizard will appear– select **Next**



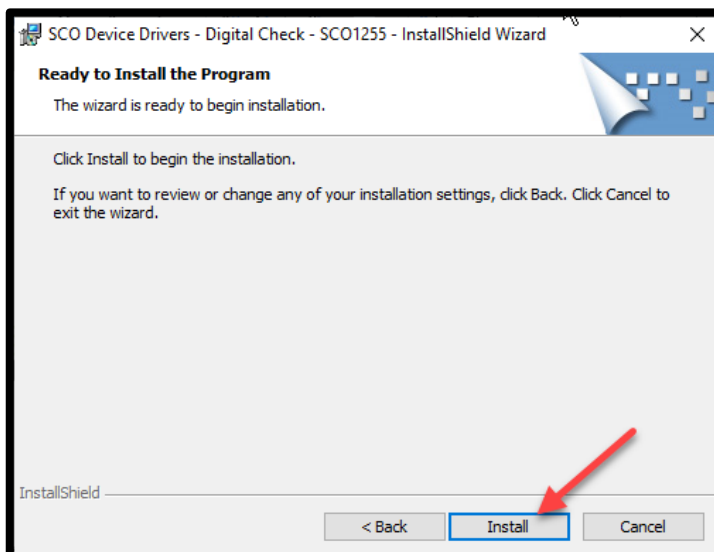
Types of scanners currently offered:



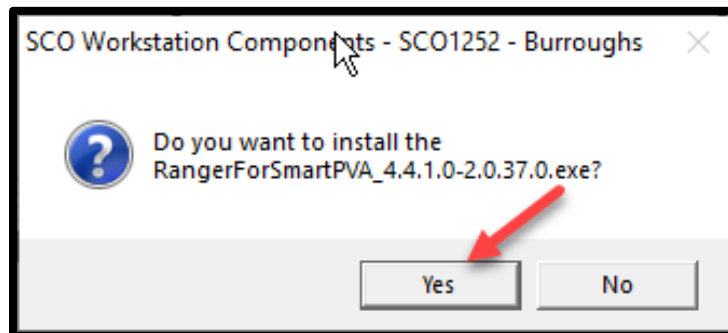
Select your scanner type from the dropdown and select **Next**



Select **Install**

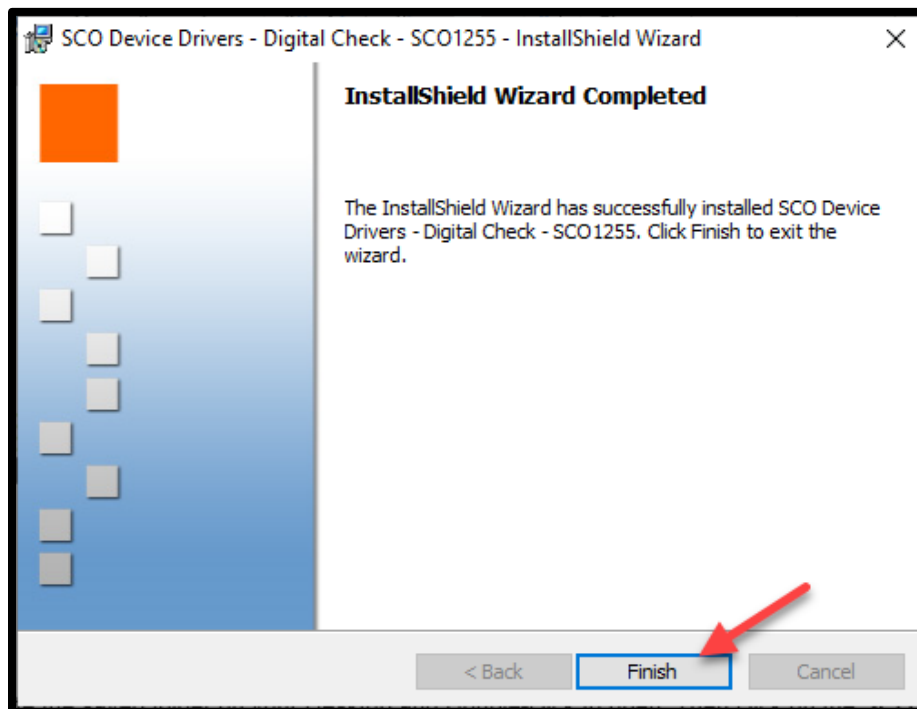


When the SCO Workstation Component warning appears. Select **Yes**



When the Install Completed pop-up appears select **Finish**

Install may take up to 15 minutes to complete, and does not show a progress bar



*****You must wait until the Install Completed pop-up appears before moving forward to other installation steps*****

Browser Compatibility Settings

This download will allow Desktop Teller to be used in Chrome, Edge, or Firefox

Visit our [Desktop Teller Page](#)

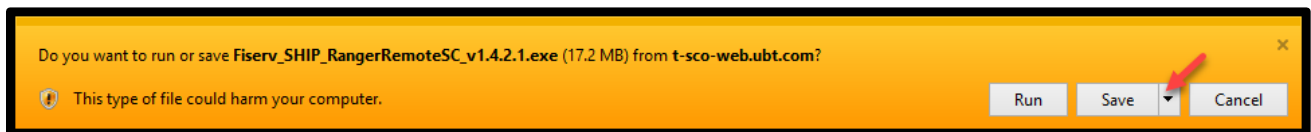
Select the **Ranger Remote Driver** tile



A download box will appear at the bottom of the browser window

Select the dropdown arrow next to Save, and select **Save As**

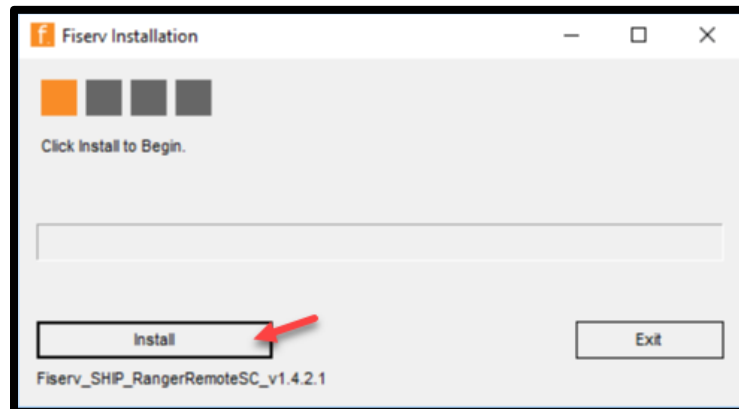
Save the download to your desktop



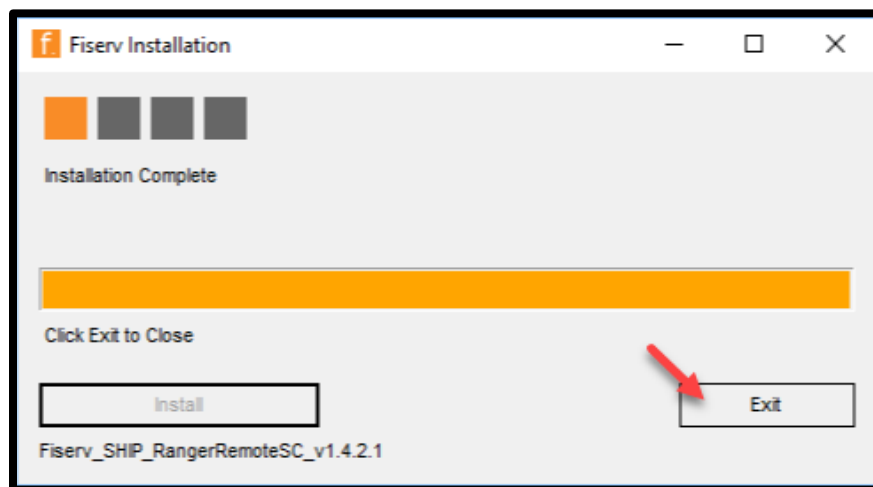
Open the Fiserv_SHIP_Ranger_Remote download



Select **Install** when the installation box appears



Select **Exit** once the download has completed



Close any internet browser window that may be open

The scanner is now ready to make deposits in Chrome, Microsoft Edge or Firefox

Creating the First Deposit

If the Driver and Ranger Remote installs were recently completed, it is recommended you restart your computer

Plug the scanner into an available USB port, and verify it is turned on

Visit our [Desktop Teller Page](#) to locate our guides and best practices to assist you in creating deposits

Desktop Teller Downloads

Drivers and user guides

- Desktop Teller User Guide**
Icon: Open book
- Exception User Guide**
Icon: Book with checkmark
- Installation Instructions**
Use this PDF to guide you through installing the driver.
Icon: Document with checkmark
- Desktop Teller Best Practices**
Tips and best practices for using Desktop Teller.
Icon: Dollar sign in a shield

< >